



Ref: SB047	Version: 1.0
Title – Update to HWM Upload Address	
Made By: AE 05/05/15	(Issue 1)

Update to HWM Manual Upload Addresses

As part of on-going improvements to our Data Management systems, it is necessary to change the HWM HTTP upload destination address that Radwin uses to send data to DataGate.

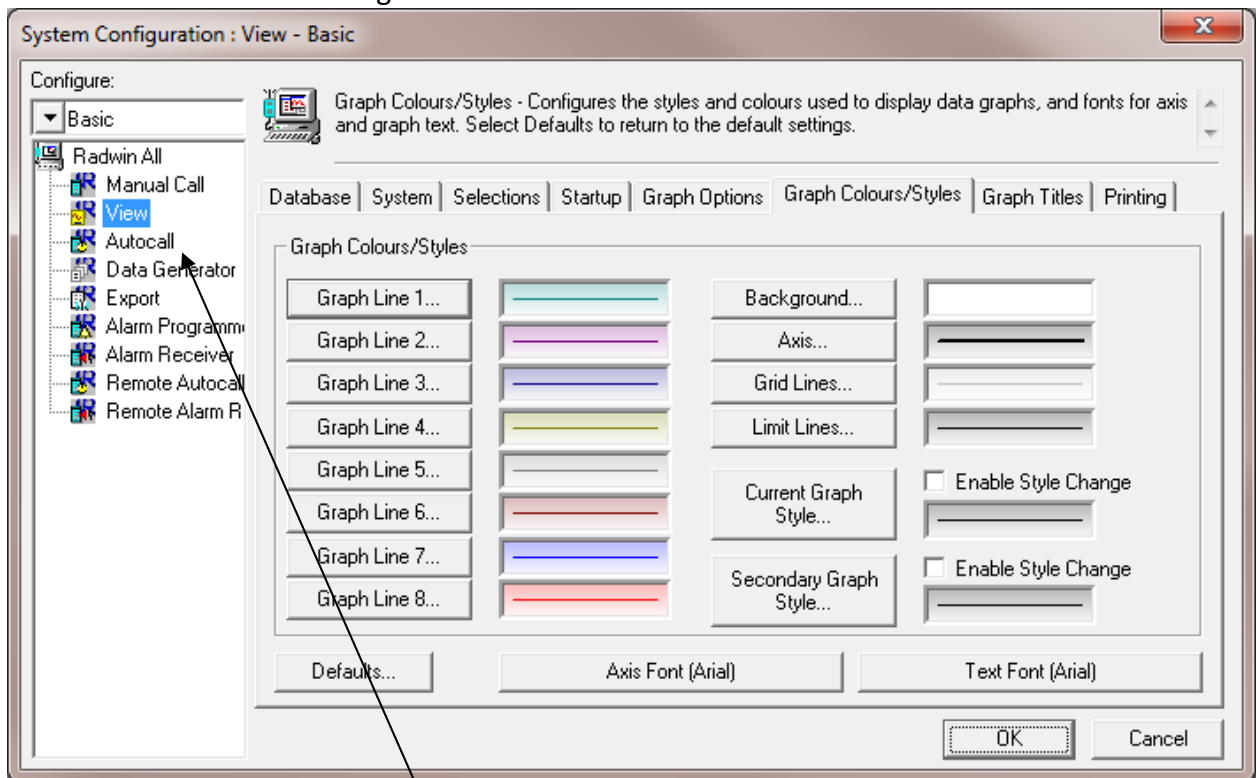
There are different addresses depending on where your data is to go.

These addresses are:-

General	https://radwin.hwmonline.com/api
Yorkshire Water	https://yw-man.hwmonline.com/api
Severn Trent	https://st-man.hwmonline.com/api
United Utilities	https://uu-man.hwmonline.com/api

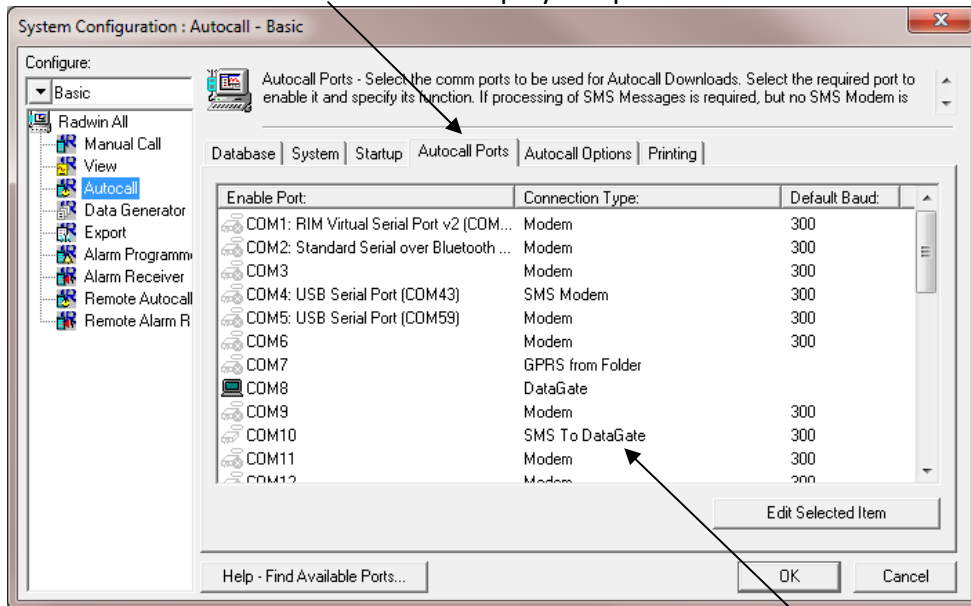
To change this setting in Radwin follow the steps below:-

1. Run Radwin and select Configuration → Basic

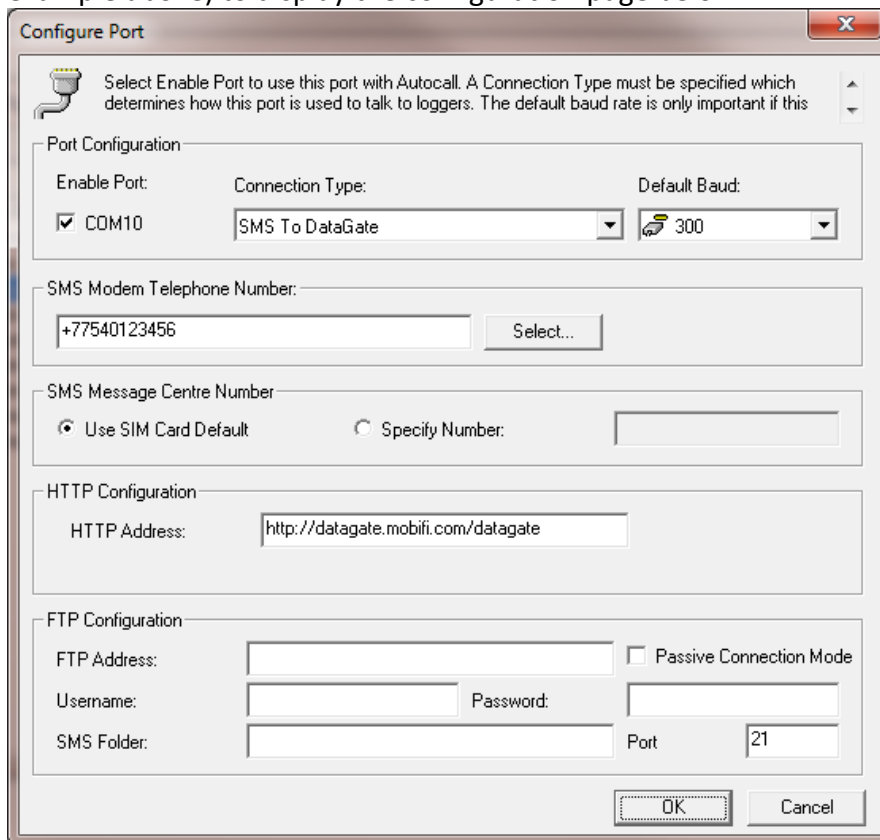


From the left hand list select Autocall

2. Next click the Autocall Ports tab to display the port list



3. Now Double-Click the port that you use for sending data to DataGate (COM10 in the example above) to display the configuration page below:





Ref: SB047	Version: 1.0
Title – Update to HWM Upload Address	
Made By: AE 05/05/15	(Issue 1)

- Now carefully enter your new HTTP Address into the HTTP configuration box as in the example below:

The screenshot shows a dialog box titled "HTTP Configuration". Inside, there is a label "HTTP Address:" followed by a text input field containing the URL "https://radwin.hwmonline.com/api".

- Finally click OK to store the new settings.

The automatic upload will now use the new path to upload your data to DataGate the next time you have data to send. If your data upload fails for any reason, please check the address has been entered correctly and try again.

Document History:

Edition	Date of Issue	Modification	Notes
1st	05/05/15	Release	